

October 27, 2010
FOR IMMEDIATE RELEASE

MEDIA ADVISORY

Media Contact:
Michelle Vargas, (213) 400-3479
michelle.vargas@lacity.org

CITY OFFICIALS BREAK GROUND ON STORMWATER LOW FLOW DIVERSION PROJECT IN DOWNTOWN

Stormwater improvement will help keep Los Angeles River clean and healthy

WHAT

A groundbreaking ceremony to mark the start of construction on the Downtown Los Angeles Low Flow Diversion project.

WHO

Councilman José Huizar, District 14
Board of Public Works President Cynthia M. Ruiz
Bureau of Sanitation Director Enrique C. Zaldivar
Bureau of Engineering Stormwater Division Manager Michael Brown

WHEN

Thursday, October 28, 8:00 a.m.

WHERE

Northeast corner of S. Santa Fe Avenue and E. 7th Place in Downtown Los Angeles

BACKGROUND

The City of Los Angeles Department of Public Works is building a stormwater diversion structure to divert stormwater from the 7th Street storm drain to the sewer system during year-round dry weather. The Downtown Los Angeles Low Flow Diversion (LFD) project will help the City comply with water quality mandates for the Los Angeles River.

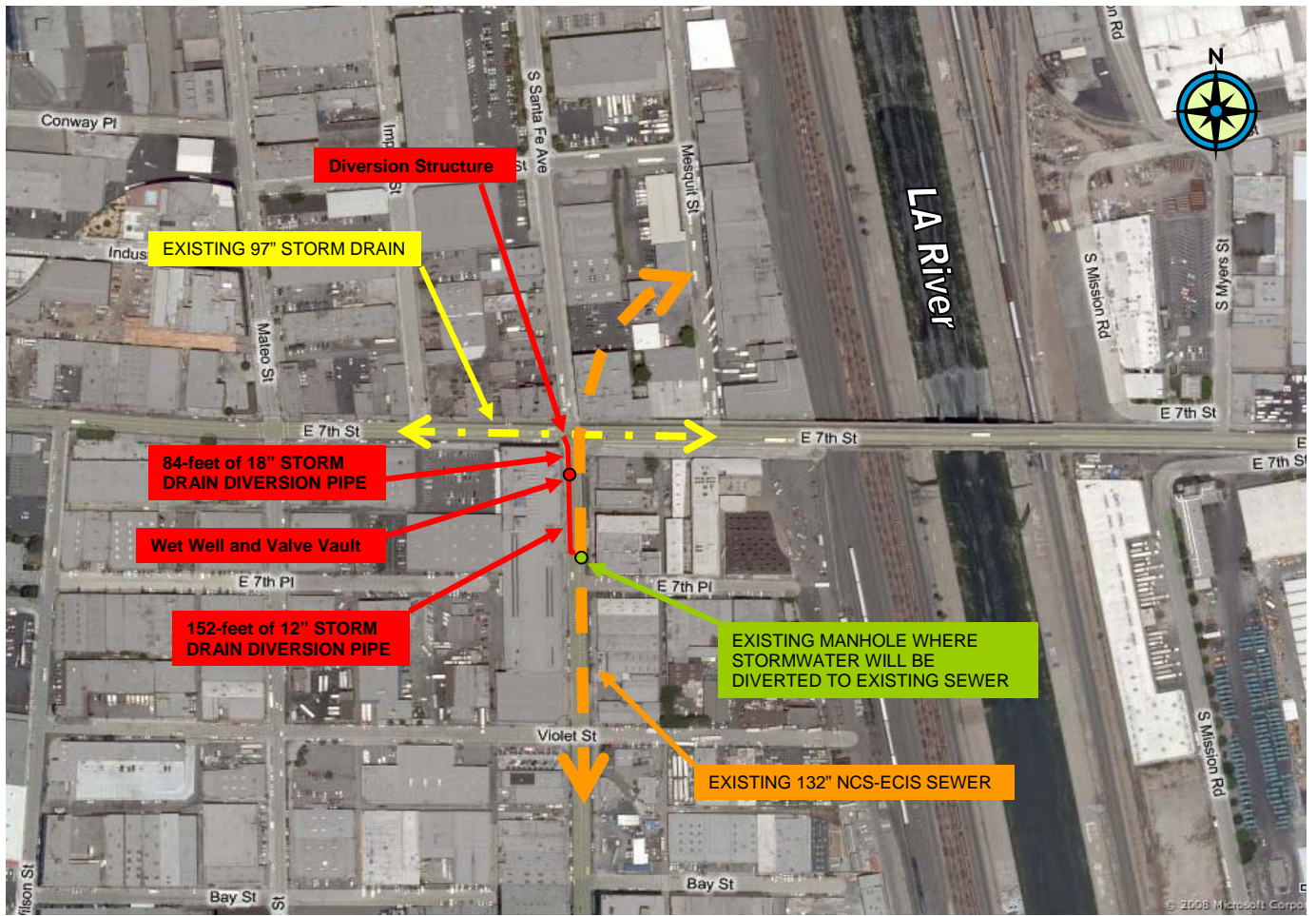
The existing 7th Street storm drain leads to the Los Angeles River. It collects runoff from a 440-acre drainage area, comprised of mostly industrial and commercial properties. A street and sidewalk washing study conducted along 7th and 8th Streets in Downtown LA showed that significant amounts of trash, debris and metals flow into the area's catch basins. Tests on outlets and sub-drainage water revealed significant levels of coliform bacteria. This project will keep these pollutants out of the Los Angeles River, and instead diverted to the sewer system that ends up at the Hyperion Wastewater Treatment Plant.

(more)

PROJECT FACTS:

- Construction Cost: \$735,000
- Construction Schedule: Fall 2010 through early 2011
- Traffic impacts: Lane closures along S. Santa Fe Avenue, between 7th Street and S. 7th Place. At least one traffic lane will be maintained at all times.
- Project Owner: City of Los Angeles, Bureau of Sanitation
- Design & Construction Manager: City of Los Angeles, Bureau of Engineering

PROJECT MAP:



This project was undertaken in connection with the settlement of two Clean Water Act enforcement actions, Santa Monica Baykeeper v. City of Los Angeles and United States, and State of California ex Rel. California Regional Water Quality Control Board, Los Angeles Region v. City of Los Angeles.